

Price: £34.99

ISBN: ISBN 978 1 84114 705 5

Format: Hardback, 184 pages, 235x195mm, profusely illustrated with over 250 colour images

Imprint: Halsgrove in association with The Royal Cornwall Polytechnic Society

Published: March 2008

Halsgrove Sales Contacts:

Sue Rhodes-Thompson – DDI 01823 653770 suet@halsgrove.com

Caren Ash – DDI 01823 653772 carena@halsgrove.com

Marie Lewis – DDI 01823 653771 mariel@halsgrove.com

Andrew Stirling – Mobile 07971 572468 andrews@halsgrove.com

HENRY SCOTT TUKE – PAINTINGS FROM CORNWALL

THE ROYAL CORNWALL POLYTECHNIC SOCIETY
TUKE COLLECTION

Catherine Wallace

Henry Scott Tuke (1858–1929) is among the most important of those exceptional artists who formed the Newlyn School in Cornwall. Although sadly neglected for many years after his death, Tuke's importance as a distinguished British Impressionist with his own unique contribution to British art can no longer be ignored. Today he is not only of importance to Cornwall, but nationally and internationally as his works are eagerly sought by galleries and collectors alike.

Unlike many of the Newlyn School, of which he was a founding member, Tuke knew Cornwall from earliest childhood; and it was his love of the great bay at Falmouth that after two years drew him away from West Penwith to paint the varied shipping in the harbour, often from his floating studio, the *Julie of Nantes*, and the youths on the quiet beaches below his cottage at Penance Point on the outskirts of Falmouth, his home until his death.

The pictures by Tuke in the Royal Cornwall Polytechnic Society form the largest publicly owned collection of the artist's work in the United Kingdom, spanning his entire career from Slade studies to mature maritime pieces, portraits and nude compositions. It is this collection that forms the basis of this important book.



Catherine Wallace studied Fine Art at Canterbury College of Art and then Museums and Gallery studies at St Andrew's University. She curated a major exhibition of Wyndham Lewis' art at the Imperial War Museum before moving to Cornwall in 1993. She was director of Falmouth Art Gallery for eight years. She is now a freelance art consultant and works with art charities and commercial galleries as well as public museums. She is also a writer on art and is the author of *Under the Open Sky, The Paintings of the Newlyn and Lamorna Artists 1880–1940 in the Public Collections of Cornwall and Plymouth*, and *'Catching the Light': Henry Scott Tuke (1858–1929)*.



Halsgrove House, Ryelands Industrial Est.ate,
Bagley Road, Wellington, Somerset TA21 9PZ

Tel: 01823 653777 Fax: 01823 216796

www.halsgrove.com e-mail: sales@halsgrove.com



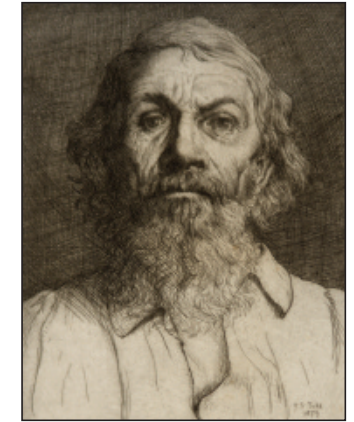
The Quay Steps, 1904



Boy and Boat



Two Children on Deck



Portrait of an Old Man, 1879



H.S. Tuke – (first right standing) with Newlyn School painters



Self Portrait, 1881



Boy in Tree (Study for Un Jour de Paresse), c. 1882



The Look-Out (aka The Lookout Man), 1908



Example of a double page spread.